

ASSIGNMENT 1

Human PERCEPTION Charrette

MOOD, COMPOSITION AND RELATION OF FORM

D4
IND 2238
Spring 2018

Overview

The sensory experience is interior as a shift in focus. With the five senses as protagonists of a space, we created a sense memory of the experience of place and environment, making use of the full range of human senses in interior design and thus enhancing the human element of architectural design and interior.

The elements of a space: light, functionality, ventilation, acoustics, color and different materials that compose it cause a purely emotional reaction. The sensory interior becomes a tool to communicate, persuade and seduce the customer through our emotions.

Objectives

- Identify and conceptualize installations that create mood and evoke emotion
- Understand the relationship between the guests feeling while experiencing the interior spaces.

Assignment/Procedure

Physical Modeling

Rigid Cardstock

- Students will create a base template for a 5" x 5" open box by removing the front and back.
- Study Models (10) will be created to convey a feeling, emotion and experience using different (lighting, color, textures, proportion) techniques.
- Materials may be used with different textures, transparencies and opacities
- Incorporate scale figure within the models that is relevant to forms/planes

Final Models

White Museum Board

- Students will take (3) of their original concepts, and develop physical models out of Museum board and any additional material that help convey the desired mood/emotion.
- All final models must be well crafted

Deliverables

Final presentation board

24" x 36" printed presentation

- Students will photograph all (10) models and showcase the (3) final models
- All models to have specific emotion/mood labeled with one identifying word
- Layout, presentation, formatting, open to student interpretation

NO COMPUTER RENDERINGS WILL BE ACCEPTED

Take into consideration that one of the spaces in your Final Project (house/residence) must reflect the result of at least one of your 3D model Concepts.

ASSIGNMENT 1

Human PERCEPTION Charrette

MOOD, COMPOSITION AND RELATION OF FORM

D4
IND 2238
Spring 2018

Due Date

Assigned

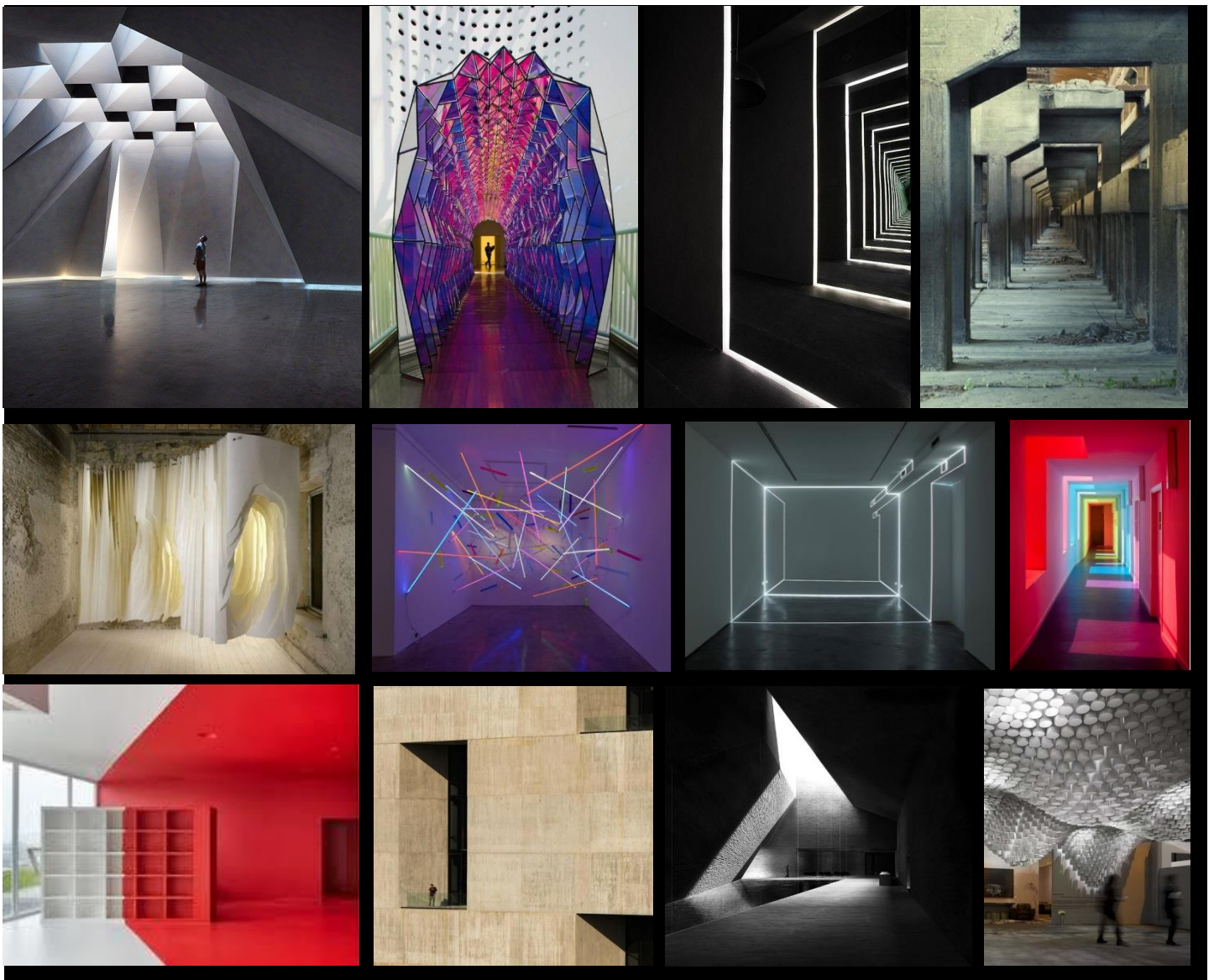
Monday January 8th, 2018

Working Day

Wednesday January 10th, 2018

Final Pin-Up

Wednesday January 17th, 2018



"Don't forget to site every source you use on your work and presentations. It is essential to avoid Plagiarism"